

ANAHEIM CITIZENS REDISTRICTING COMMITTEE

City Council District Map Submission
October 25th, 2021

INTRODUCTION

The Anaheim Citizens Redistricting Committee (ACRC) was established in June 2021 to ensure community voices were heard in Anaheim city redistricting processes. Centering the lived experiences and needs of low-income communities of color and working families, the ACRC has pursued maps and other redistricting outcomes that maximize opportunities for year-round organizing and policy advocacy, working toward a city that treats everyone equitably and with justice. Organizing across diverse communities builds bridges, better mitigates potential conflict between groups, and deepens the foundation for collective work over the next decade.

ACRC Participants

The committee includes 5 members that reflect Anaheim's diverse communities.

- Arab American Civic Council
- ACLU of Southern California
- Orange County Asian Pacific Islander Community Alliance (OCAPICA)
- Orange County Congregation Community Organization (OCCCO)
- Orange County Communities Organized for Responsible Development (OCCORD)

Each member brings a deep connection and engagement with communities on the ground, with a particular focus on community organizing and integrated voter engagement in Anaheim city.

Since June 2021, ACRC members have been meeting virtually once a month to advance their collective work. To promote greater community engagement in redistricting, ACRC have (1) educated members and residents about redistricting, (2) created a space through which they identify and articulate communities of interest (COI) important to them, (3) mobilized community members to present testimony at community meetings, and (4) worked closely with them to create city redistricting maps that best address the needs of low-income communities of color and working families.

Members shared their communities of interest mostly in West Anaheim. A summary of these communities of interest is provided in the following section.

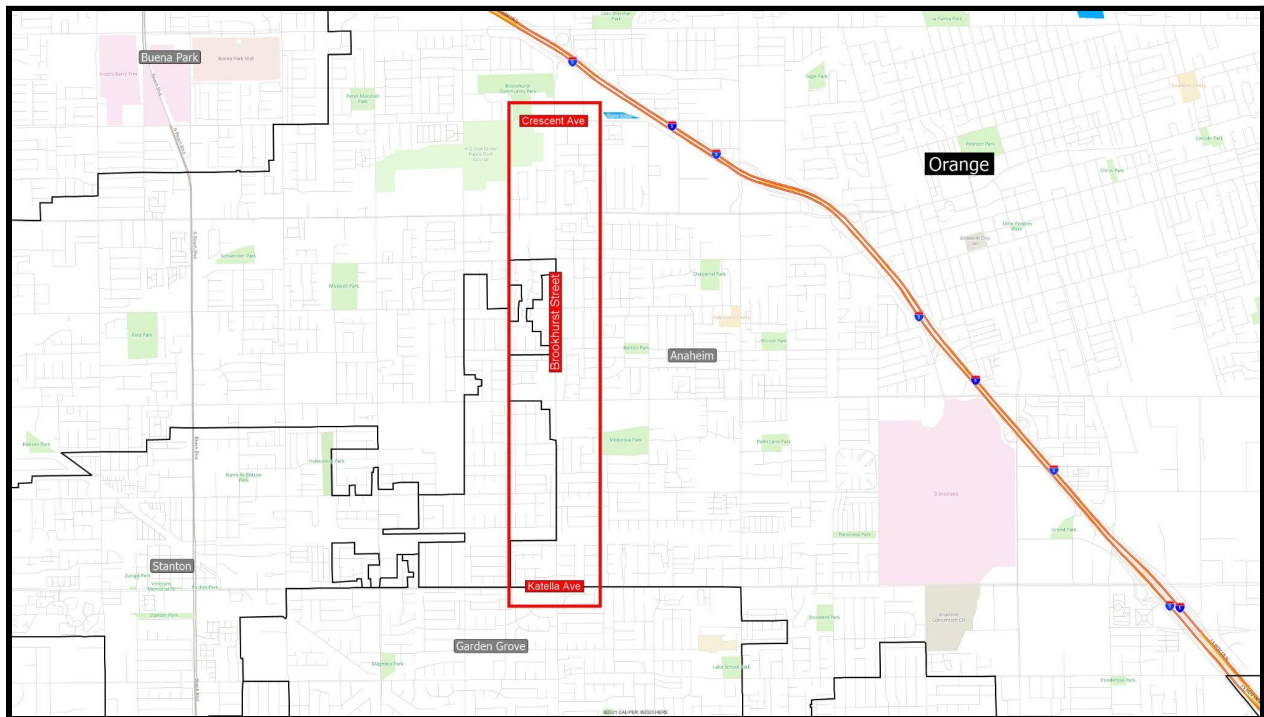
This submission represents the culmination and collective effort of 5 months of engagement.

Summary of Community of Interest

Little Arabia

Summary: Located in west Anaheim on Brookhurst Street between Crescent Avenue and Katella Avenue (see Figure A below), Little Arabia is home to more than one hundred small businesses serving Orange County's diverse Middle Eastern, Muslim, and South Asian (AMEMSA) community, including ethnic grocery stores, restaurants, cafes, hair salons, halal butcher shops, and professional services. It is also home to important religious institutions such as the West Coast Islamic Society and nonprofit and social service organizations that serve the community.

Figure A: Little Arabia, Anaheim California.



Source: Caliper Corporation, Maptitude for Redistricting .

Guidance: Keep the area of Brookhurst Street between Crescent Avenue and Katella Avenue whole.

Sycamore Junior High School

Summary: Located in west Anaheim at 1801 East Sycamore Street, Anaheim, California 92805 (see Figure B below), families whose children attend this Sycamore Junior High mostly live west of North East Street. It is important for the school to be in the same district where the students and parents live.

Figure B: Sycamore Junior High School, Anaheim California.



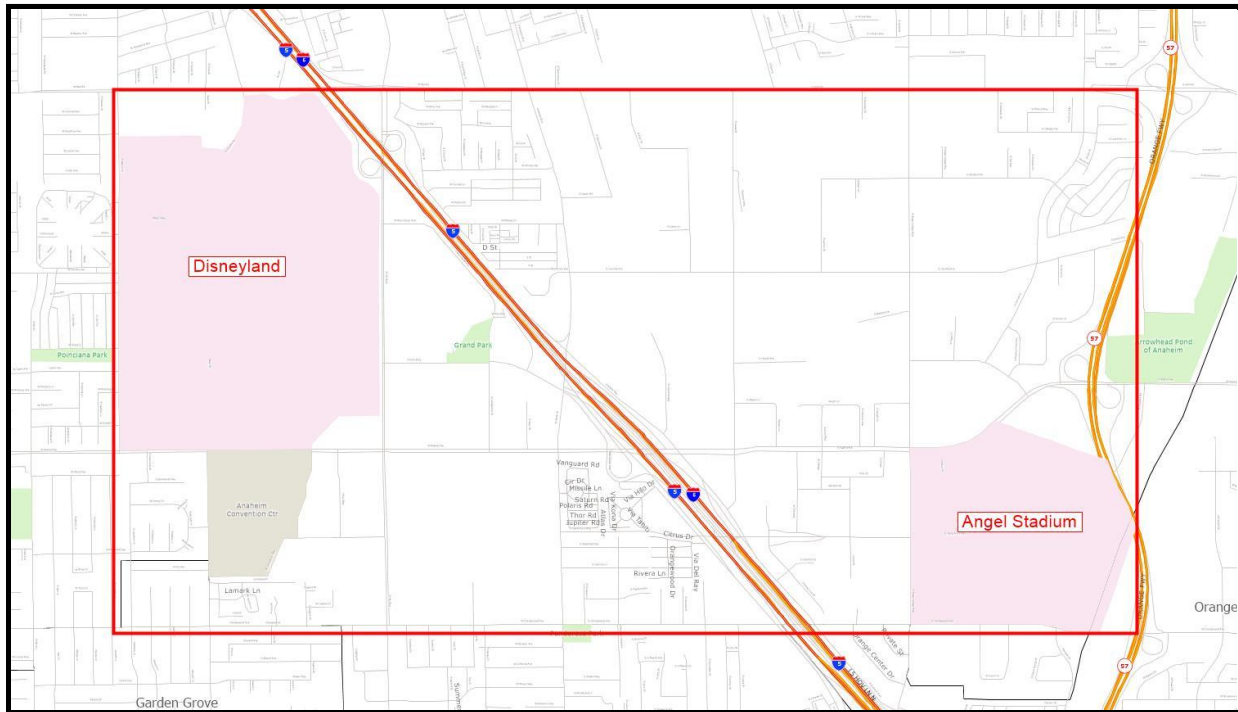
Source: Caliper Corporation, Maptitude for Redistricting.

Guidance: Keep Sycamore Junior High School with the Historic Anna Drive Latinx community west of North East Street.

Disneyland and Angels Stadium

Summary: Disneyland and the Angel Stadium are two of the largest entertainment communities of interest in Anaheim. Not only are they close in geographic proximity, but also share common commercial interests. Working-class residents agree that they should be drawn in one district together.

Figure C: Disneyland and Angel Stadium, Anaheim California.



Source: Caliper Corporation, *Maptitude for Redistricting*.

Guidance: Keep Disneyland and Angel Stadium together in one district.

Respect for the requirement of making boundaries easily identifiable. The Council district boundaries are easily identifiable and understandable to residents and follow natural and artificial barriers, streets, and the boundaries of the City.

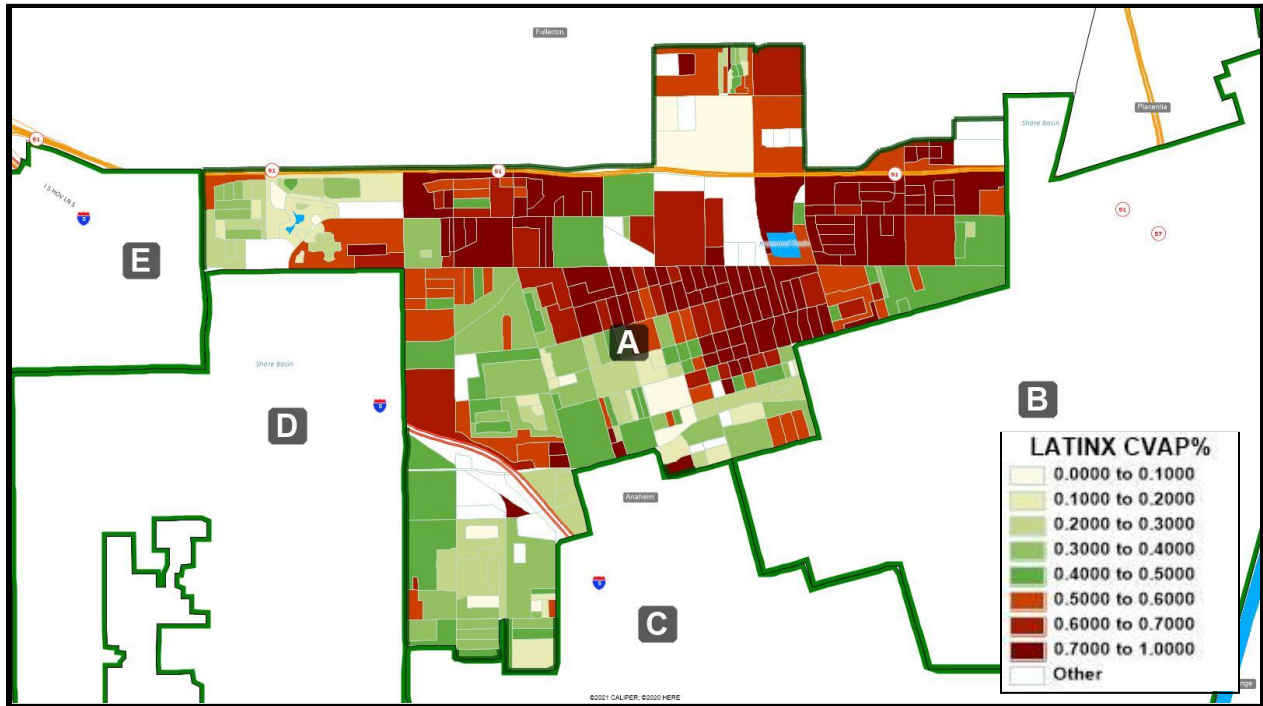
Respect for the requirement of compactness. The plan draws compact districts where possible, understanding that federal Voting Rights Act compliance and maintaining the integrity of communities of interest may require drawing less compact districts.

Respect for nonpartisanship. The plan was developed to address community needs and does not favor or discriminate against a political party.

Priorities for City Council Districts

- District A creates a federal Voting Rights Act compliant district around cohesive Latinx communities with the Historic Anna Drive Latinx community west of North East Street and Sycamore Junior High School together. Families whose children attend this Sycamore Junior High mostly live in Anna Drive. Based on official redistricting data released from the Statewide Database at U.C. Berkeley in September, the Latinx community can constitute a majority of a city council district's citizen voting-age population in this part of Anaheim City.
- District B creates a federal Voting Rights Act compliant district around cohesive Latinx communities with mostly working class communities with different interests than the adjacent districts. Based on official redistricting data released from the Statewide Database at U.C. Berkeley in September, the Latinx community can constitute a majority of a city council district's citizen voting-age population in this part of Anaheim City.
- District C creates a federal Voting Rights Act compliant district around cohesive Latinx communities, mainly concentrated within the Ponderosa community located between Disneyland and Angel Stadium. Considering the workforce population within the commercial district, having cohesion would maintain the community. Based on official redistricting data released from the Statewide Database at U.C. Berkeley in September, the Latinx community can constitute a majority of a city council district's citizen voting-age population in this part of Anaheim City.
- District D brings the Little Arabia community of interest together. Little Arabia is home to more than one hundred small businesses serving Orange County's diverse Middle Eastern, Muslim, and South Asian (AMEMSA) community, including ethnic grocery stores, restaurants, cafes, hair salons, halal butcher shops, and professional services. It is also home to important religious institutions such as the West Coast Islamic Society and nonprofit and social service organizations that serve the community. Community members emphasized the significance of maintaining their established community.
- District E maintains the integrity of a long-time homeowner community together.
- District F maintains the integrity of higher income areas in Anaheim Hills.

District A



Total Population: 57,334

Deviation: -626 (-1.08%)

Federal Voting Rights Act: SECTION 2 COMPLIANT DISTRICT

Group	Voting-Age Population		Citizen Voting-Age Population		Voter Registration		Voter Turnout	
	#	%	#	%	#	%	#	%
Latinx	29,077	65.99%	15,799	54.00%	12,754	52.59%	9,328	50.12%

Contiguity: District A is contiguous. Major streets are divided for the district to be compliant with federal Voting Rights Act and population balance.

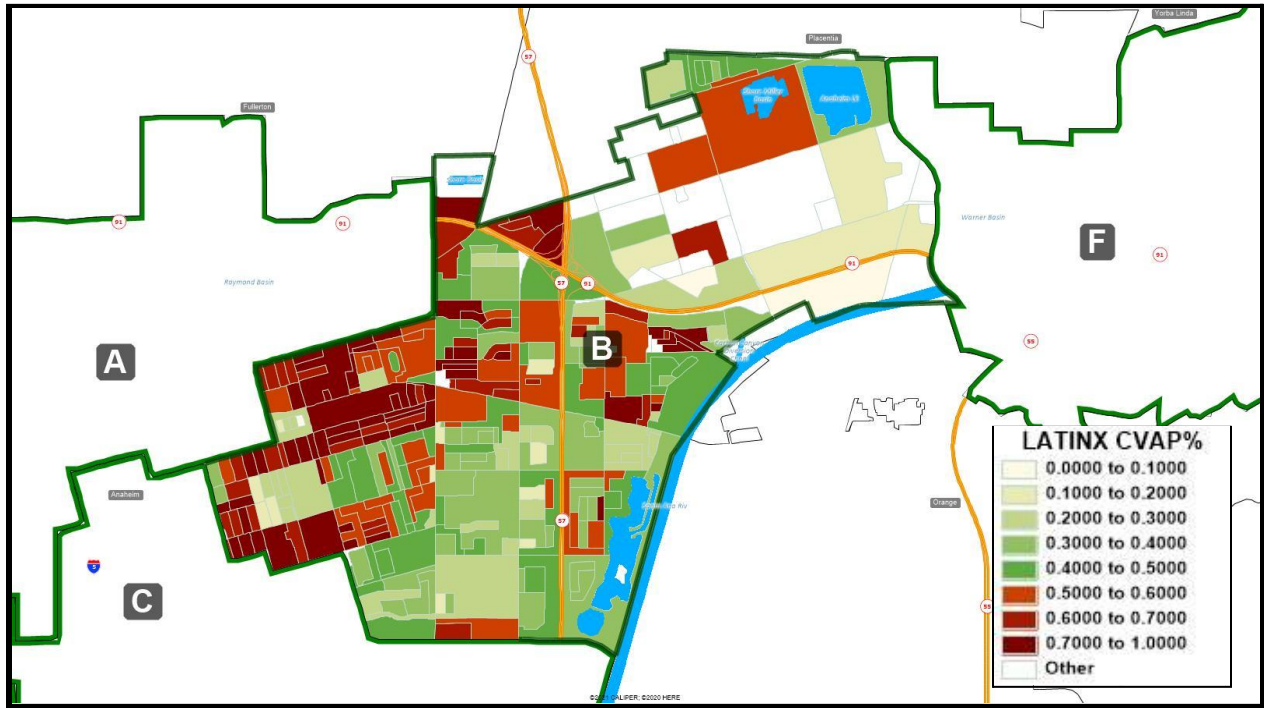
Communities of Interest:

District A is a federal Voting Rights Act compliant district for the Latinx community that unites disproportionately immigrant and low-income communities in Sycamore Junior High School and Historic Anna Drive Latinx community located west of North East Street.

Compactness

District A is compact, with a population polygon score 0.50 or greater.

District B



Total Population: 58,316

Deviation: +356 (+0.61%)

Federal Voting Rights Act: SECTION 2 COMPLIANT DISTRICT

Group	Voting-Age Population		Citizen Voting-Age Population		Voter Registration		Voter Turnout	
	#	%	#	%	#	%	#	%
Latinx	27,204	61.01%	16,287	50.07%	12,623	46.85%	9,649	44.75%

Contiguity: District B is contiguous. Major streets are divided for the district to be compliant with federal Voting Rights Act and population balance.

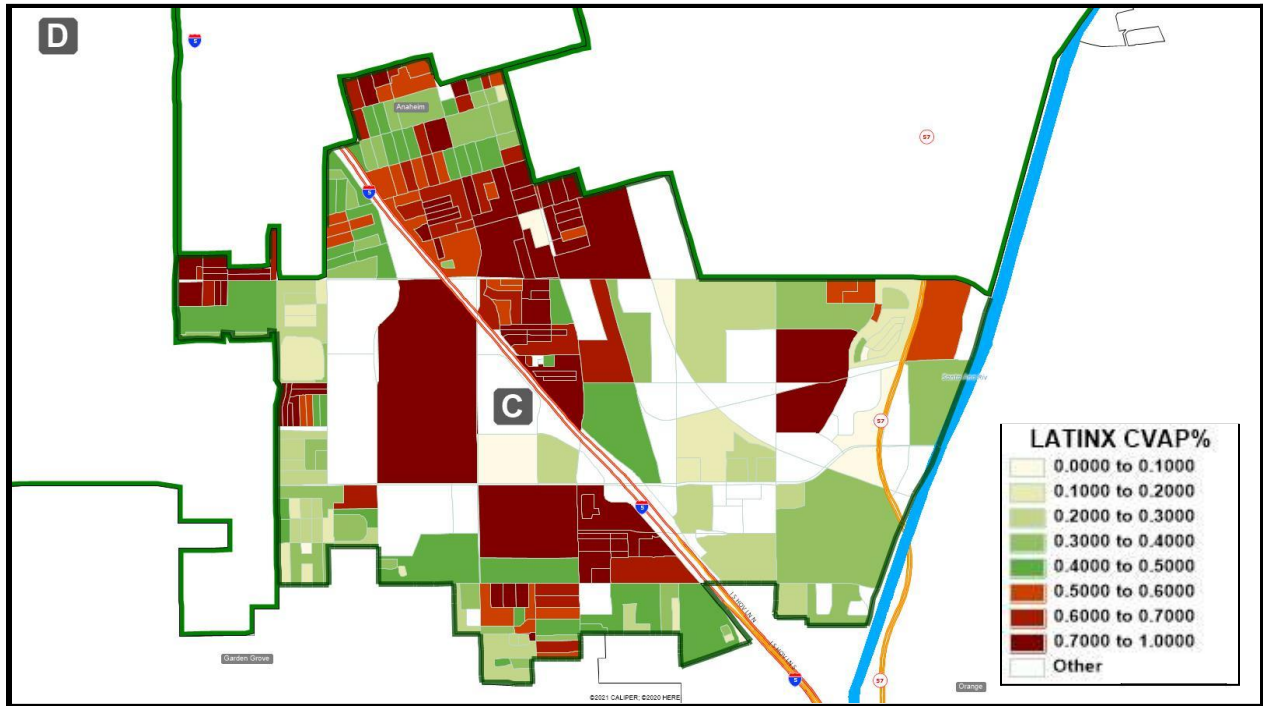
Communities of Interest

District B is a federal Voting Rights Act compliant district for the Latinx community that unites disproportionately immigrant and low-income communities along the Santa Ana River.

Compactness

District B is compact, with a population polygon score 0.50 or greater.

District C



Total Population: 57,865

Deviation: -95 (-0.16%)

Federal Voting Rights Act: SECTION 2 COMPLIANT DISTRICT

Group	Voting-Age Population		Citizen Voting-Age Population		Voter Registration		Voter Turnout	
	#	%	#	%	#	%	#	%
Latinx	26,493	59.43%	13,433	50.13%	10,717	47.58%	7,809	45.04%

Contiguity: District C is contiguous. Major streets are divided for the district to be compliant with federal Voting Rights Act and population balance.

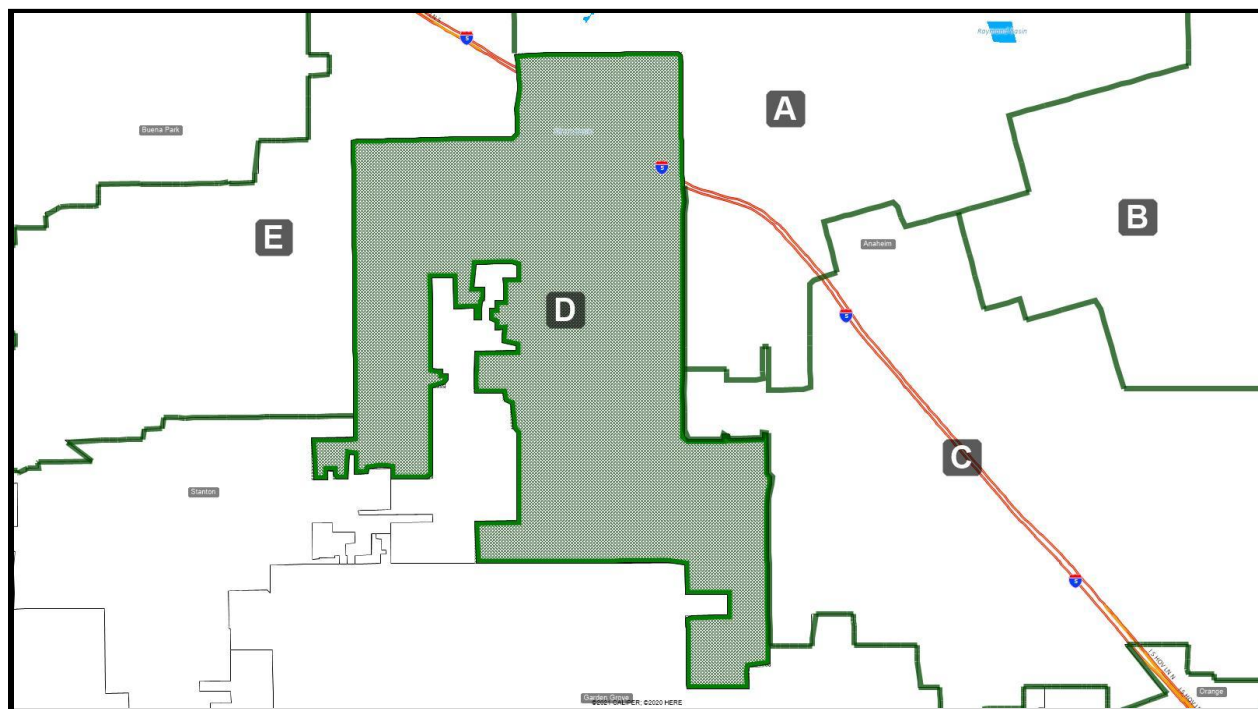
Communities of Interest:

District C is a federal Voting Rights Act compliant district for the Latinx community that unites the Ponderosa communities and keeps Disneyland and Anaheim Stadium together that share similar needs and interests.

Compactness:

District C is compact, with a population polygon score 0.50 or greater.

District D



Total Population: 59,045

Deviation: +1,085 (+1.87%)

Federal Voting Rights Act: N/A

Contiguity: District is contiguous. Major streets are divided for adjacent districts A and C to be compliant with federal Voting Rights Act and population balance.

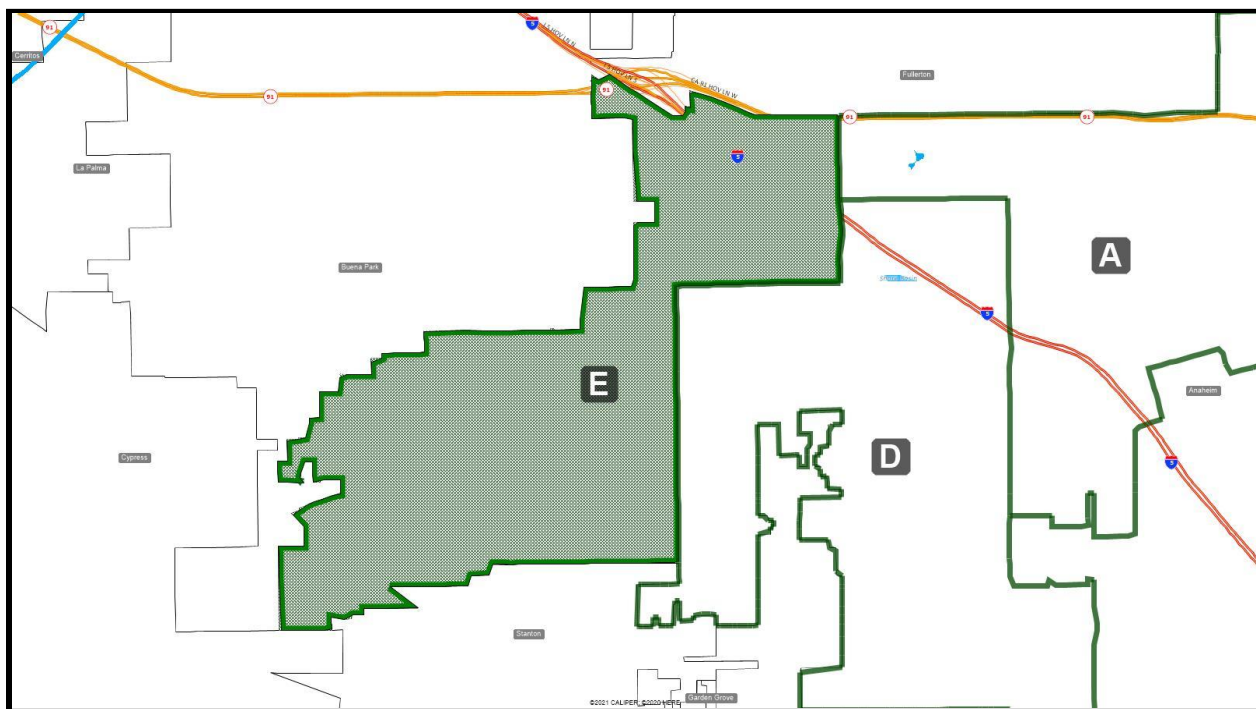
Communities of Interest:

District D keeps the Little Arabia area of Brookhurst Street between Crescent Ave and Katella Ave whole.

Compactness

District D is compact, with a population polygon score 0.50 or greater.

District E



Total Population: 57468

Deviation: -492 (-0.85%)

Federal Voting Rights Act Compliance: N/A

Contiguity: District E is contiguous. Major streets are divided for adjacent district A to be compliant with federal Voting Rights Act and population balance.

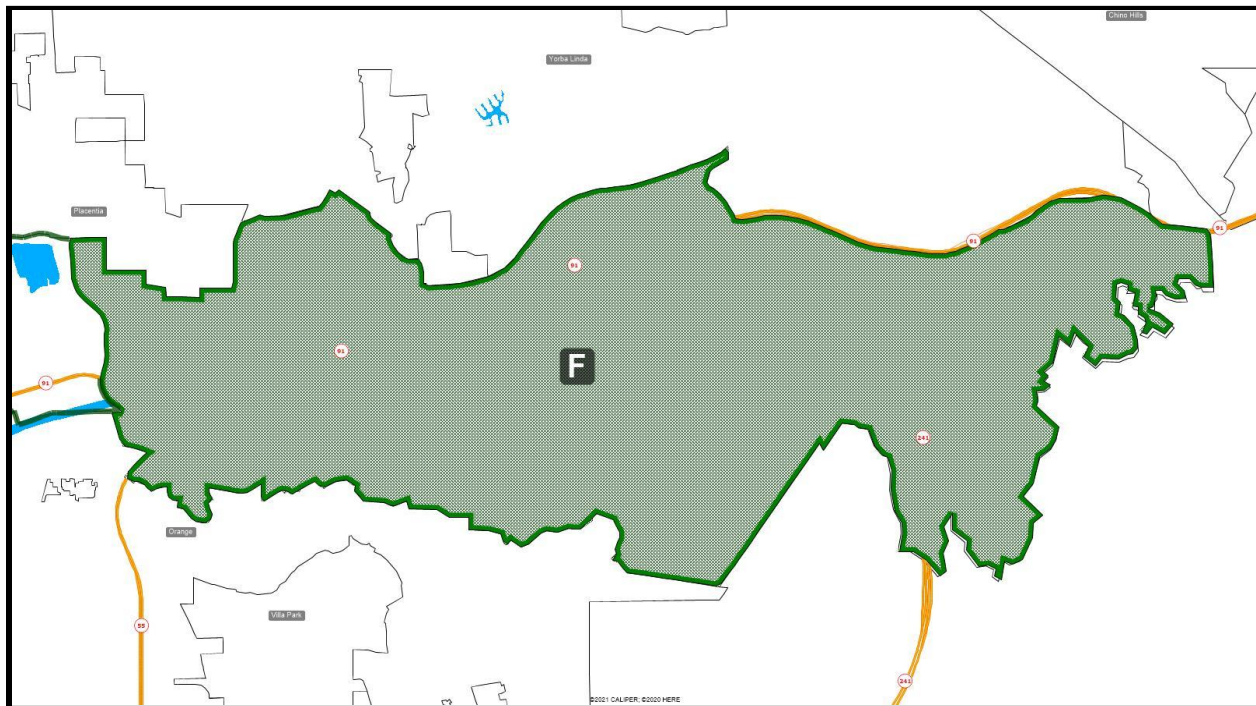
Communities of Interest:

District E keeps the long-time homeowner communities together.

Compactness:

District E is compact, with a population polygon score 0.50 or greater.

District F



Total Population: 57,729

Deviation: -231 (-0.40%)

Federal Voting Rights Act Compliance: N/A

Contiguity: District is contiguous.

Communities of Interest:

District F maintains the integrity of higher income communities in Anaheim Hills.

Compactness:

District F is compact, with a population polygon score 0.50 or greater.